

---

# Next



# D Light Digital Dimmer Unit



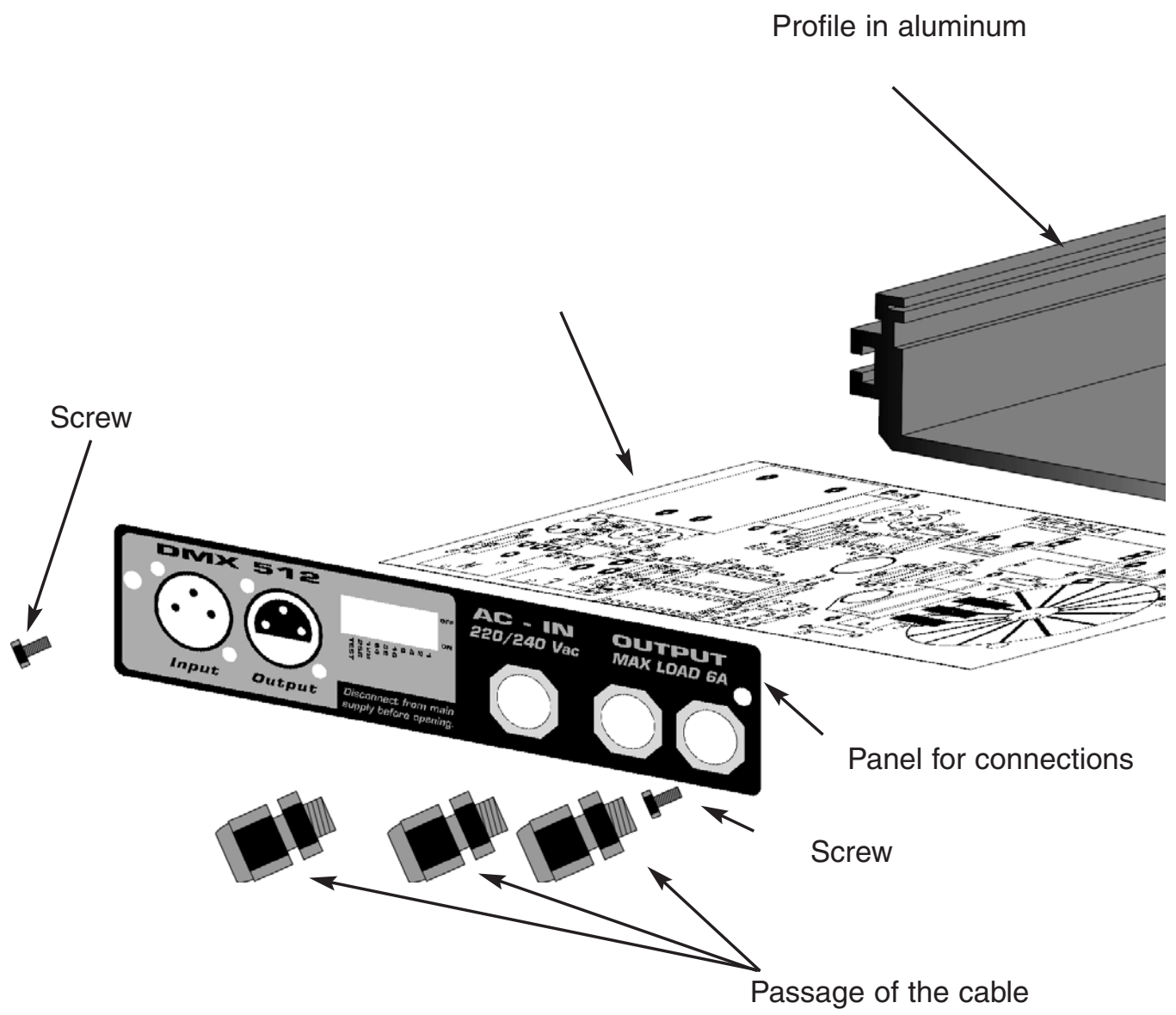
**GB** **USER'S MANUAL**

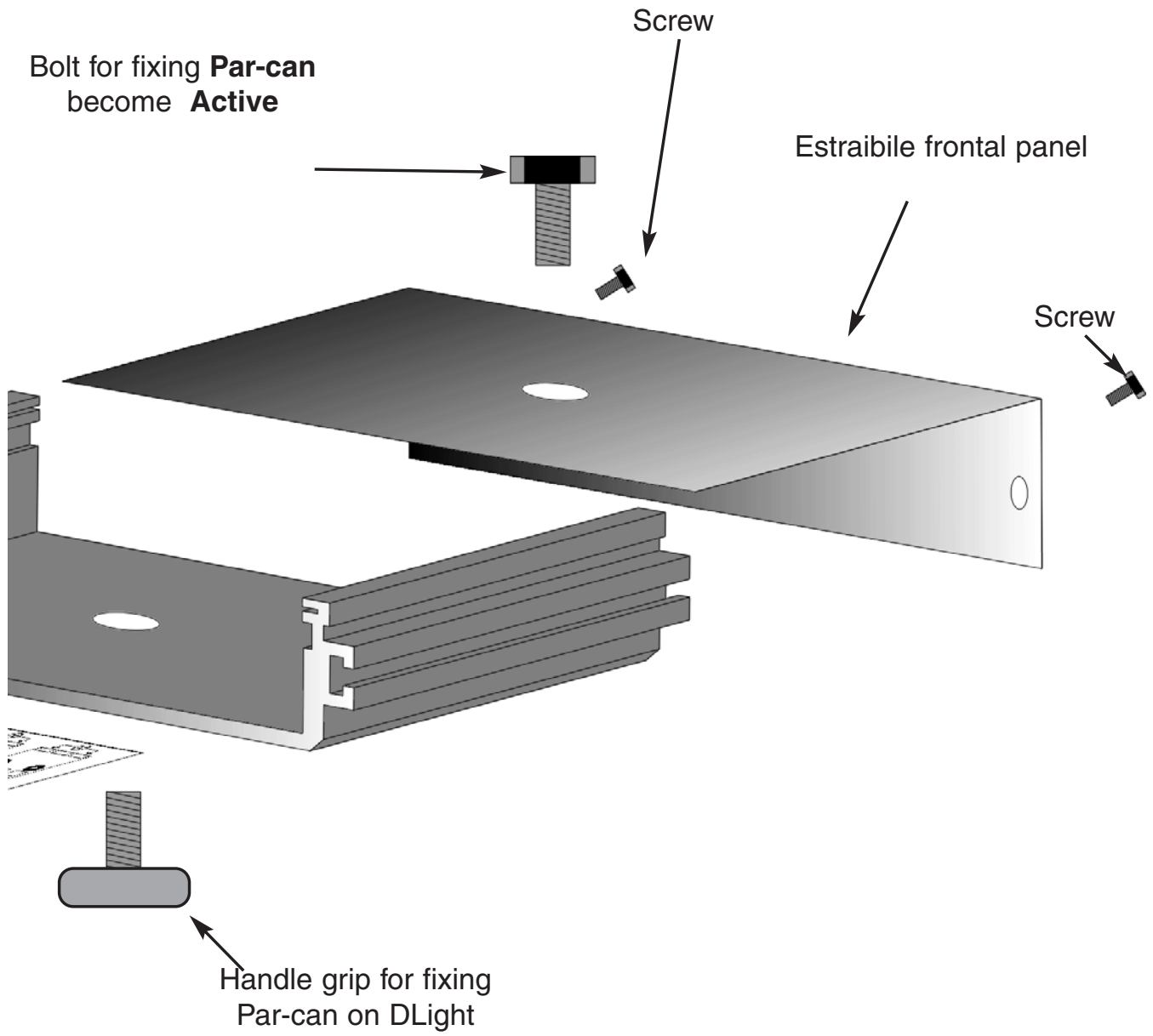
---





*We congratulate you on your purchase of Dlight  
Before you proceed using this product it should be necessary to read  
carefully the following user's manual to install it correctly and to get the  
best of its potentialities.*





***Sets of the equipment***

**1.1** Unpacking of the equipment

**1.2** Accessories issued with the equipment and relative documentation

***Description of the rear panel and installation***

**2.1** Description of the rear panel

**2.2** DMX 512 input/output connection

***Description of the Electronic circuit and relative connection***

**3.1** Description of the Electronic circuit and relative connection

***Protections***

**4.1** Over-heating protection

**4.2** Overload protection

**4.3** Protection against short-circuiting

**4.4** Protection against incorrect connections

***Error messages***

**4.5** - Error messages

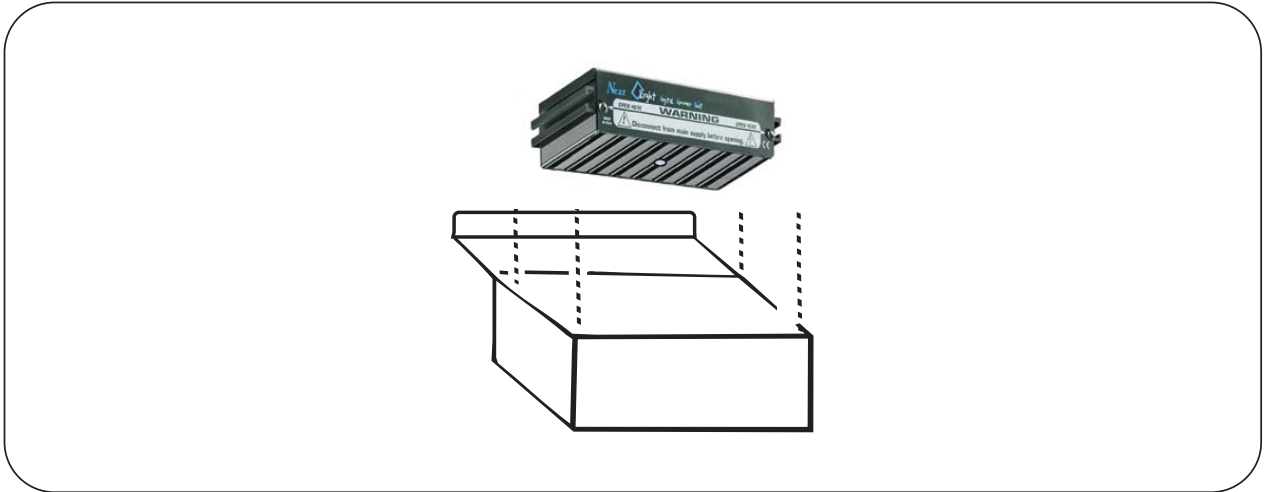
***Technical features***

## 1.1 Unpacking of the equipment

GB

Open the box; take the documentation out.

Take the equipment out of the box as shown in the picture below.

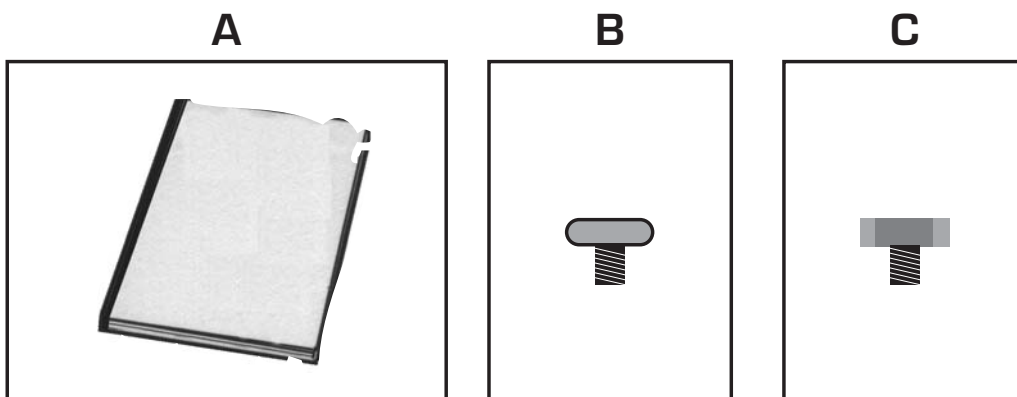


## 1.2 Accessories issued with the equipment and relative documentation

Verify the contents of the packing.

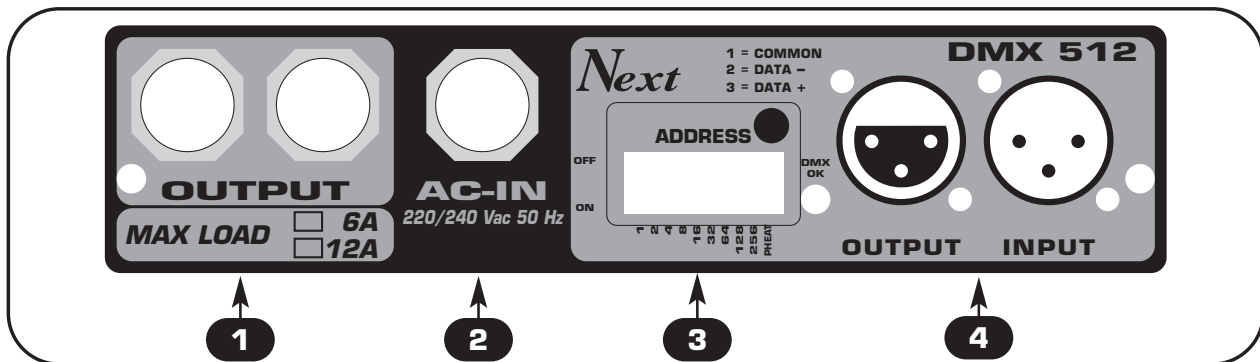
If one of the following parts of the packing is missing or damaged, please, contact your dealer immediately.

- A) User's manual.
- B) Handle grip for fixing **Par-can** on **DLight**
- C) Bolt for fixing **Par-can** become **Active** .



## 2.1 Description of the rear panel and installation

GB



- 1 Outputs for Par-can with PG9
- 2 AC-IN 220/240Vac 50 Hz with PG9
- 3 Dip-switch for signal Dmx Address
- 4 Standard DMX 512 signal IN/OUT with a 3-pin cannon connector.

## 2.2 DMX 512 OUTPUT CONNECTION

Make sure you are using a shielded twisted cables suitable for the transmission of the DMX 512 signal with connectors of good quality and connection as shown on the side of the connector.

Plug the 3-pin cannon connector coming from the mixer completely in the DMX 512 input **4**

Use the “push” safety hook to disconnect it and than extract it gently.

Use the output connector for connect other D-Light.

**ATTENTION:** the shielded part of the cable must never be connected to the ground of the electrical system as this could cause faults during the working of the controller.



### 3.1 Description of the Electronic circuit and relative connection

GB

Unscrew the two screw of the frontal panel and extract the same one.

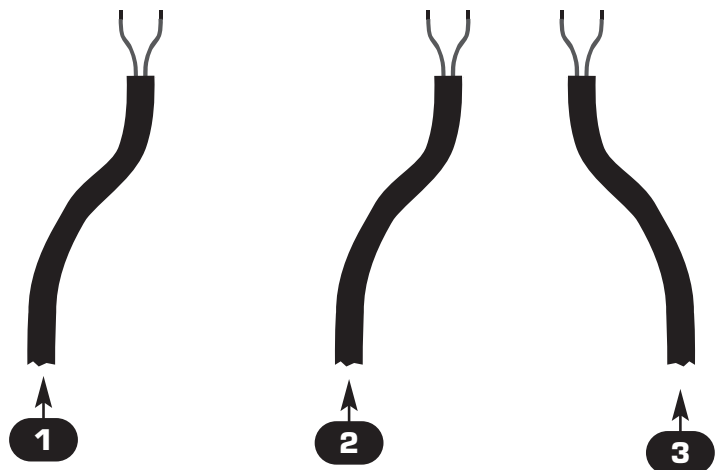
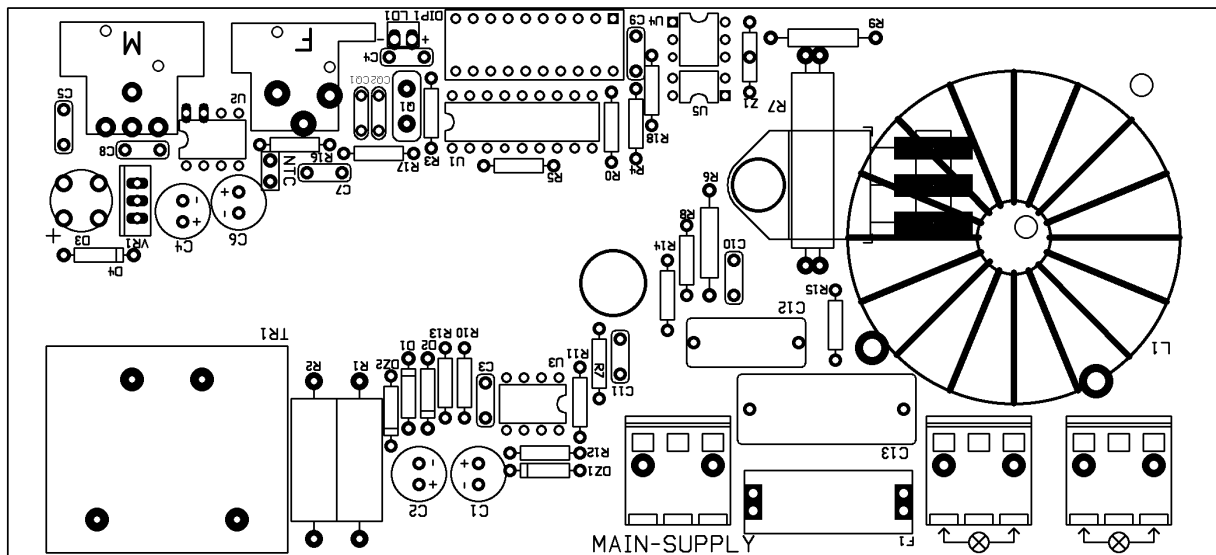
Go through the cables in the correspondents PG9 (main supply and Par-can)

Connect main supply cable **1** in the terminal MAIN-SUPPLY

Connect first Par-can cable **2** in the terminal with symbol 

Connect second Par-can cable **3** in the terminal with symbol 

**N.B.** Connect always the ground cable (yellow/green) to the ground terminal.  
Use always a suitable section cable to connect power supply and lamps.  
Be sure that current socket is capable to delivery required current.



The **DLIGHT** is endowed with efficient protections for avoid that any malfunction could damage it, the protections are:

**4.1 - OVER-HEATING PROTECTION:**

The maximum temperature of work is 90° C. and it is measured inside of the **DLIGHT**. When exceeded this temperature, the output come disable up to when the temperature doesn't return within normal values.

**4.2 - OVERLOAD PROTECTION:**

The output channel of the **DLIGHT** has set for delivery not more than **6/12 A** continuous, up this threshold the output is electronically limited.

**4.3 - PROTECTION AGAINST SHORT-CIRCUITING:**

When a Short circuit occurs, the **DLIGHT** disable the channel immediately, for afterward try to be switched on it again.

After **3** attempts, if the Short Circuit persists, the **DLIGHT** switches off the channel definitely for protect the installation.

**4.4 - PROTECTION AGAINST INCORRECT CONNECTIONS:**

In the eventuality that the dimmer is wired incorrect, the electronic inside circuit is protected from fuse of appropriate value, the fuse in normal conditions of use don't operate.

**4.5 - ERROR MESSAGES**

Error messages are indicated by the led giving a long flash. Should a message indicating an irregularity appear, switch off the **DLIGHT** immediately, find the cause and eliminate it.

**Technical features****Technical features:**

- **Digital Dimmer Unit 1 channel DMX**
- Input **Signal DMX 512/1990 STANDARD.**
- Version **6A / 12A**
- **Single phase operation 220/240 Vac 50 Hz.**
- **Dip-switch** for digital address. (1/512).
- **Digital lamps pre-heat control** through **Dip-switch.**
- **LC interference filter.**
- Digital **Protection** from high temperature.
- Digital **Protection** from short circuit and overload.
- **DMX-512** with **3 pin XLR** male and female **input/output.**

**Climatic condition for the use**

- Humidity: **35% ÷ 80%**
- Temperature: **5 ÷ 50 °C**

**Dimensions and weight**

- Dimension (W x L x H) / Weight: **180 x 42 x 80 mm / 1 Kg.**



---

**CODEM MUSIC S.r.l.** - Via G.Pierini, 13 - 61100 PESARO - ITALY  
Tel. +39 0721 204357 - Fax +39 0721 203554  
[www.codemmusic.com](http://www.codemmusic.com) - [www.wi-dmx.com](http://www.wi-dmx.com) - [info@codemmusic.com](mailto:info@codemmusic.com)

---



---

All rights reserved. No parts of this document can be copied, photocopied or reproduced without the prior written permission of the **CODEM MUSIC s.r.l.**

No responsibility is taken for possible inaccuracies or mistakes.

The **CODEM MUSIC s.r.l.** reserves the right to make any alterations or aesthetics changes of this product that seem necessary at any time and for whatever reason.

The **CODEM MUSIC s.r.l.** takes no responsibility for the use or for the application of this product.

---